

User:
Camera: CinCam CMOS 1203
Serial: 1203-U2-4521-0117
Accessory Type: plain
Date: 2026/06/12 金曜日
Type: Single Measurement

Type:
Wavelength: 1064 nm
Manufacturer:
Model:
Serial Number:
Polarization:
Output Power:

Beam Attenuator:
Beam Splitter:
Focusing Element:
Other Optical Units:

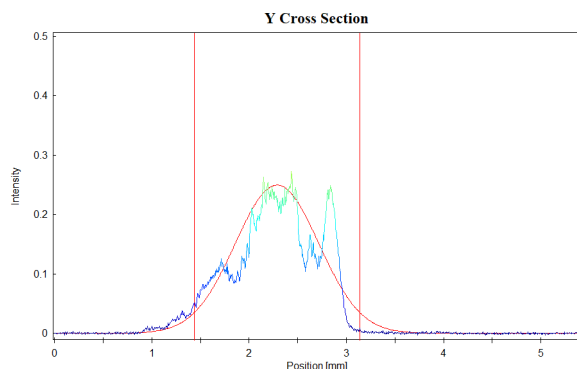
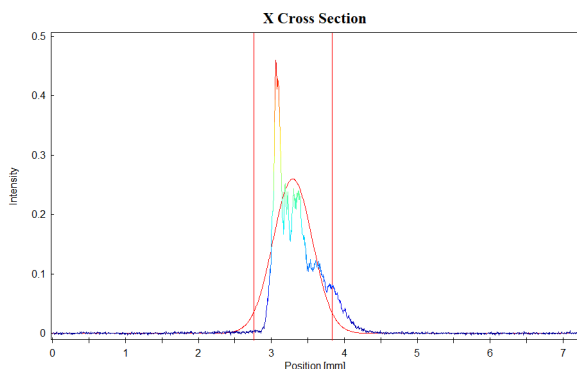
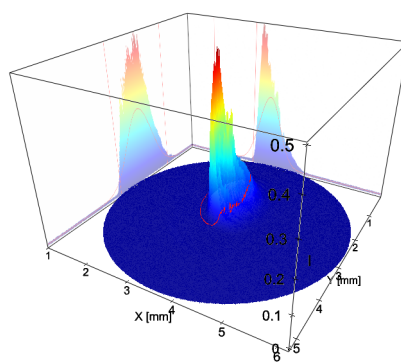
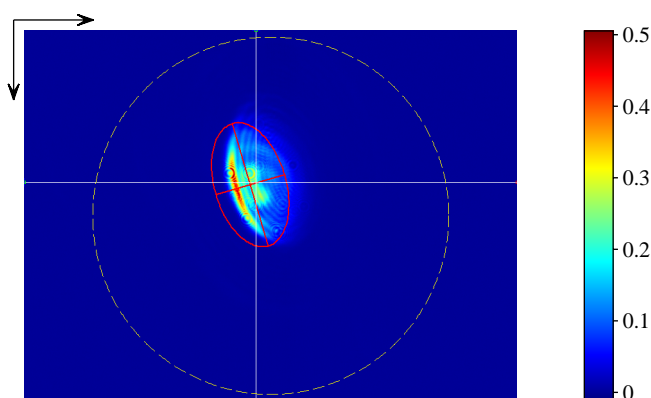
Frames: 24
Frequency:
Pixel Size: 1600 x 1200
Comment:

Operation Mode: CW
Pulse Energy:
Pulse Width:
Pulse Frequency:
M²:
Comment:

Laser Temp.:
Ambient Temp.:
Humidity:

Exposure Time: 450 us
Gain: 1.00 x
Brightness: invalid

Background: yes
Flat Field: no
Angular Response: no
Baseline: yes
Linearity: no



Statistic

Number of Pixel: 434867
Power: 1.003E+4
Peak: 0.5052
Peak Pos x: 3.055 mm
Peak Pos y: 2.129 mm
SNR: 54.2 dB

Gauss-Fit (D 4.00 Sigma ~ 1/e²)

Exponent: 2.00
Centroid x: 3.301 mm
Centroid y: 2.246 mm
--- Width Lab ---
Width x: 1.130 mm
Width y: 1.806 mm
--- Width Beam ---
Width Major: 1.857 mm
Width Minor: 1.044 mm
Azimuth Angle: 73.70 deg
Ellipticity: 0.562
Eccentricity: 0.827

Cross-Sect. Area: 1.523 mm²
Power Fraction: 85.51 %
GFI: 0.810
Correlation: 0.453